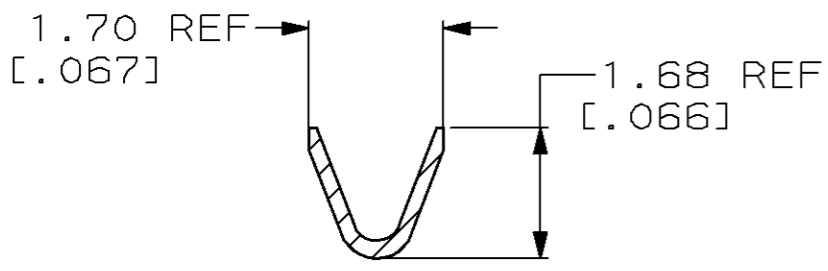
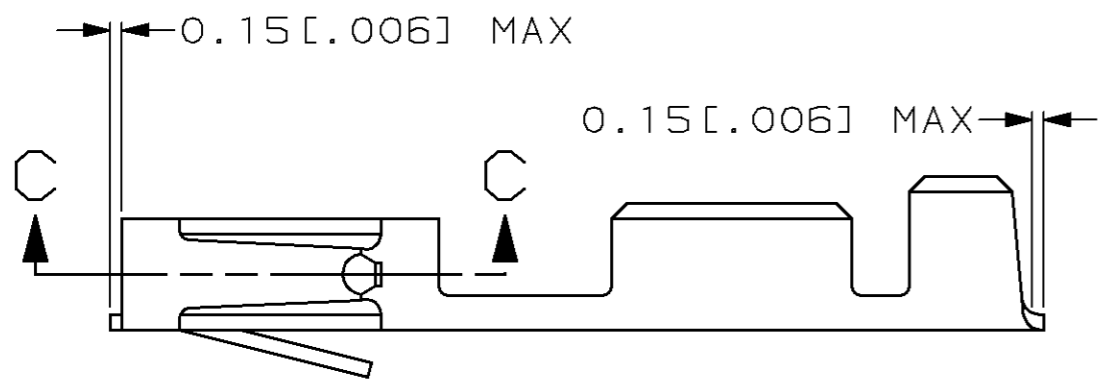
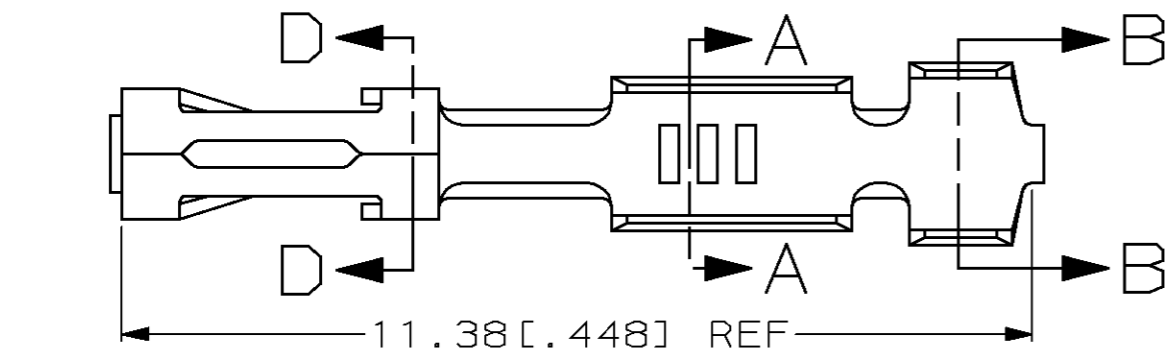
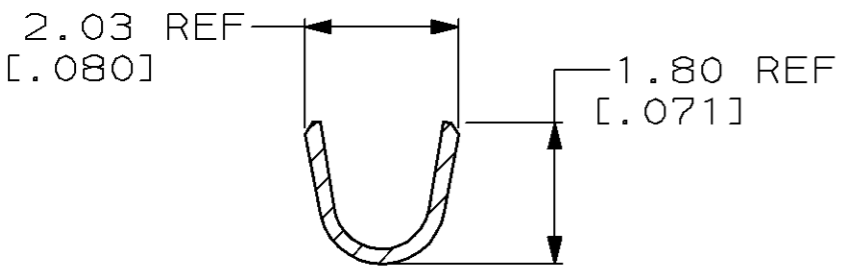


THIS DRAWING IS UNPUBLISHED. RELEASED FOR PUBLICATION, 19 .
 © COPYRIGHT 19 BY AMP INCORPORATED. ALL RIGHTS RESERVED.

LOC	DIST	REVISIONS			
P	LTR	DESCRIPTION	DATE	DWN	APVD
AD	39				
	J	RELEASED	03-JAN-96	EB	SS
	K	REV PER 0010-1496-95	18-MAR-96	EB	SS
	L	REV PER 0310-0024-97	16-JAN-97	EB	JS
	M	REV PER 0310-0325-97	28-JUL-97	EB	BS

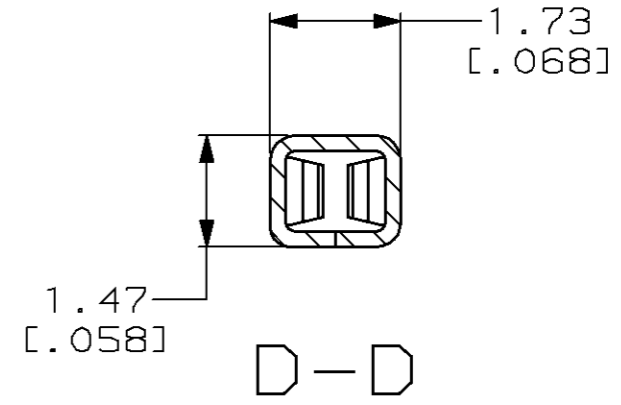
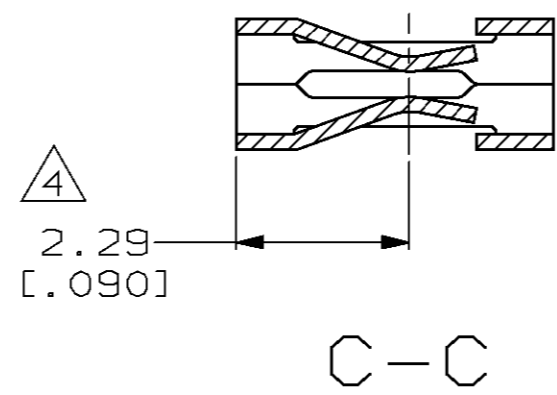


WIRE SIZE #22-#26
 SECTION A-A



INSULATION RANGE 1.55 [.061] MAX
 SECTION B-B

- 1 0.00076 [.000030] MIN GOLD IN CONTACT AREA, GOLD FLASH ON THE REMAINDER OF THE TERMINAL, ALL OVER 0.00127 [.000050]-0.00254 [.000100] NICKEL ENTIRE TERMINAL.
- 2 PREPLATED 0.00127 [.000050]-0.00381 [.000150] BRIGHT TIN.
- 3 CONTACTS TO BE TREATED WITH LUBRICANT.
- 4 POINT OF MEASUREMENT FOR PLATING THICKNESS (INSIDE BEAMS).



OBSOLETE	-	102128-5
OBSOLETE	-	102128-4
OBSOLETE	-	102128-3
	2 3	102128-2
	1	102128-1
	FINISH REF	PART NUMBER

DIMENSIONS:		TOLERANCES UNLESS OTHERWISE SPECIFIED:		DWN		AMP		AMP Incorporated		
mm	[INCH]	0 PLC	±-	CHK	DATE	NAME	Harrisburg, PA 17105-3608			
		1 PLC	±-	S. SHUEY	03-JAN-96	S. SHUEY				
		2 PLC	±0.13 [.005]	S. SHUEY	03-JAN-96	S. SHUEY				
		3 PLC	±-	PRODUCT SPEC		108-25007		CONTACT, MOD V, RECEPTACLE, CRIMP SNAP IN, LOOSE PIECE		
		4 PLC	±-	APPLICATION SPEC		114-25003		SIZE	CAGE CODE	DRAWING NO
		ANGLES	±-	WEIGHT		-		A3	00779	C-102128
MATERIAL	PhBr	FINISH	SEE TABLE	CUSTOMER DRAWING		SCALE		10:1	SHEET	1 OF 1
									REV	M